

Poncho Towels

Vivida ponchos are designed to be an oversize style fit; large and loose enough to bring your arms inside to get changed in comfort. If in doubt, we strongly recommend you pick the larger size.

How To Measure Your Size

Start with your height. Measure the length from your shoulder - the poncho should ideally sit between the knee and middle of your shin. Then check that the circumference of the Poncho Towel is wide enough to fit your chest and your arms, with some room to move.

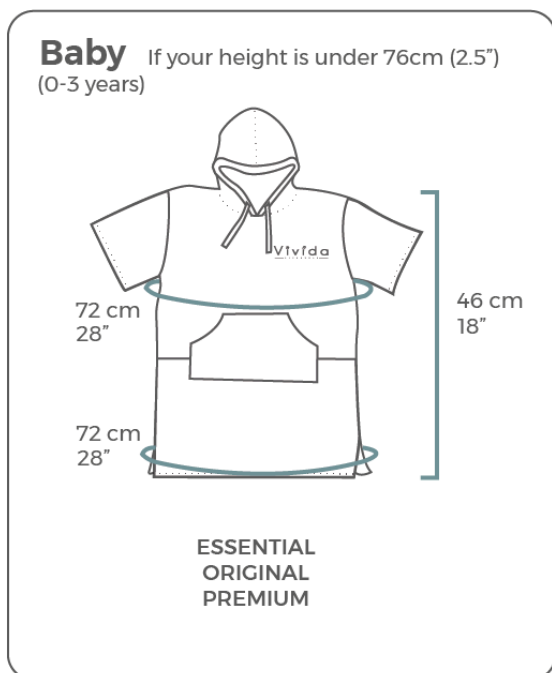
If in doubt, we strongly recommend you pick the larger size.

Garment Measurements Guide

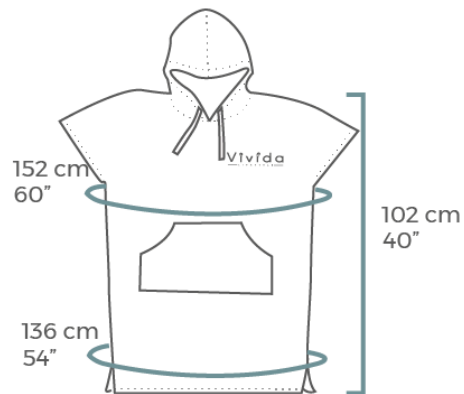
Chest Circumference: total measurement around the chest

Hem Circumference: total measurement around the hem

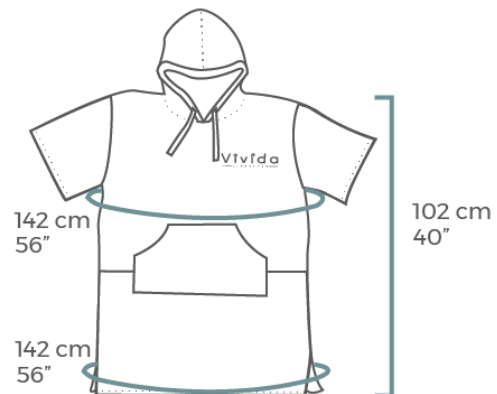
Length: The highest point of your shoulder to hem



S/M If your height is 140-163cm (4'7"-6')

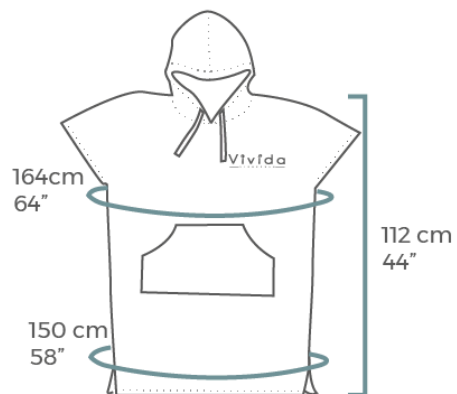


ESSENTIAL

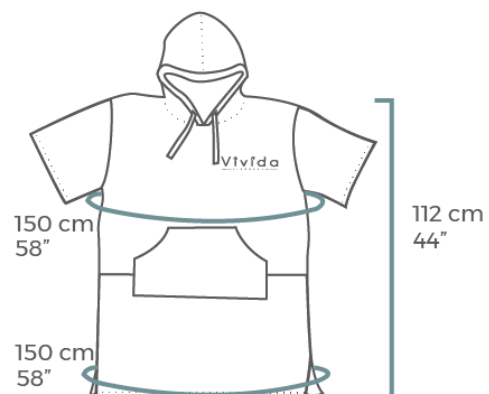


**ORIGINAL
PREMIUM**

M/L If your height is 146-212 cm (4'9"-6'9")

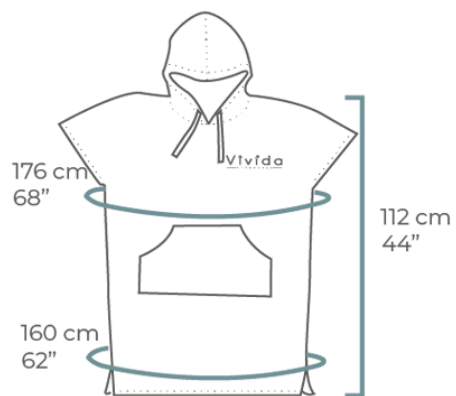


ESSENTIAL

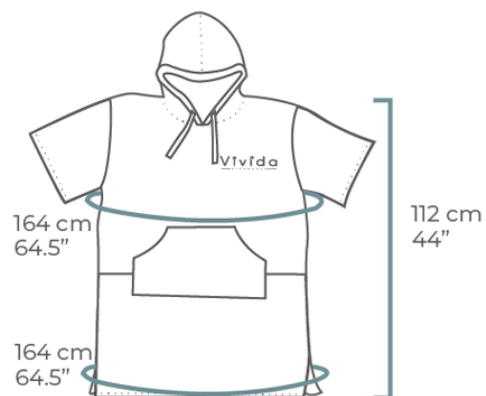


**ORIGINAL
PREMIUM**

XL If your height is 146-212 cm (4'9"-6'9")



ESSENTIAL



ORIGINAL
PREMIUM

Changing Robes

Vivida All Weather Changing Robes are designed to be an oversized roomie fit, to ensure they are spacious enough for you to wriggle around in while you get changed, and long enough to keep you covered. If you want to wear your All Weather Changing Robe as a regular coat, not for changing, consider going down a size from the size guide recommendation.

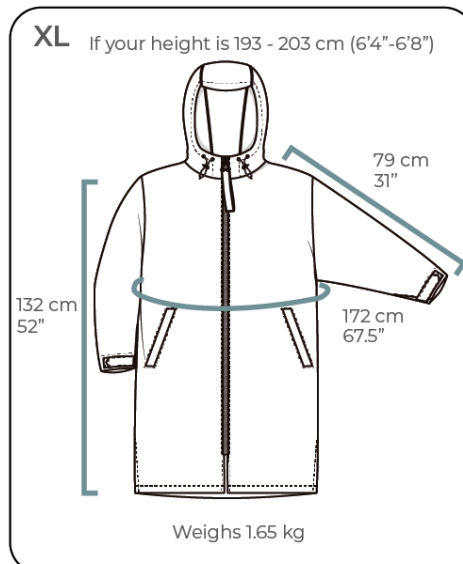
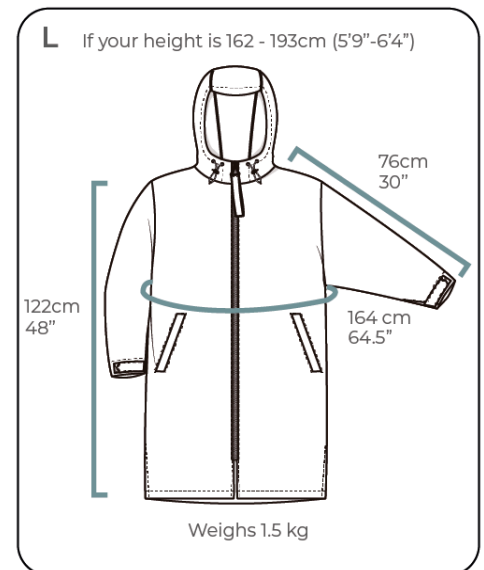
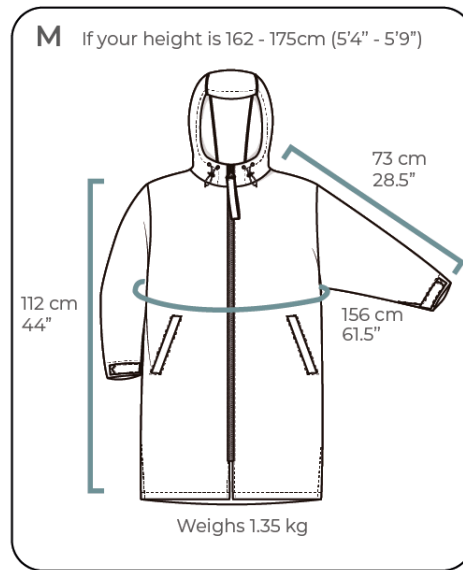
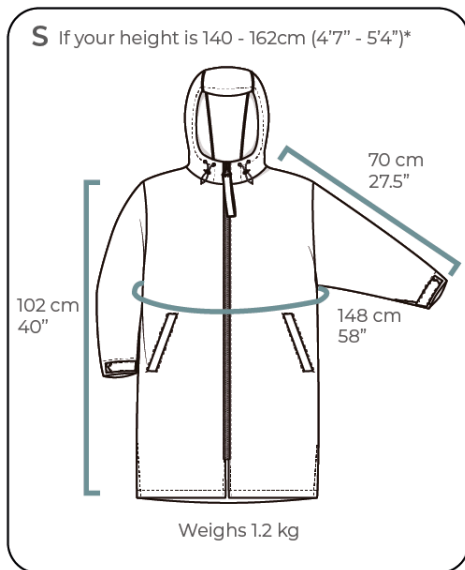
How To Measure Your Size

Check your full height against the guidelines detailed in below diagrams. The Changing Robe should ideally fall between your knee and ankle. Then check that the circumference of the Changing Robe is wide enough to fit your chest and your arms inside, with some room to move.

Measurement Guide

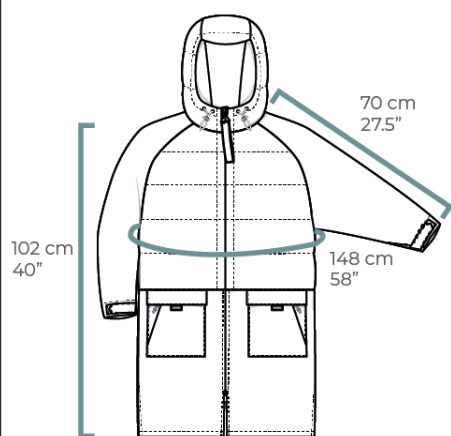
Chest Circumference: total measurement around the chest

Length: The highest point of your shoulder to hem



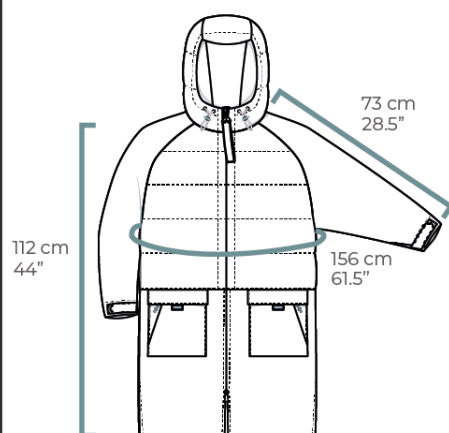
All Weather Puffer Changing Robe

S If your height is 140 - 162cm (4'7" - 5'4")*



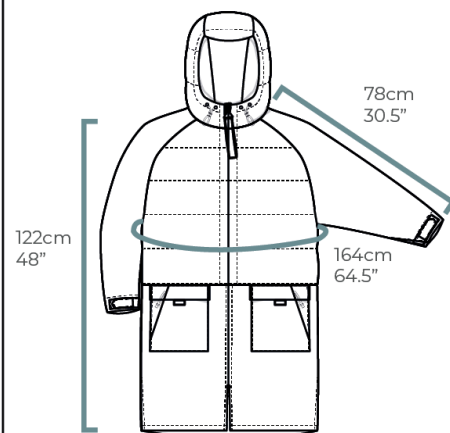
Weighs 1.3 kg

M If your height is 162 - 175cm (5'4" - 5'9")



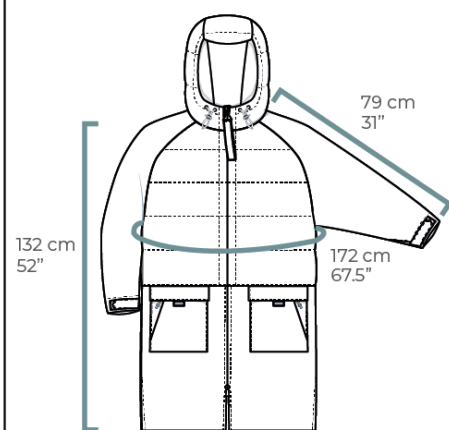
Weighs 1.45 kg

L If your height is 175 - 193cm (5'9" - 6'4")



Weighs 1.6 kg

XL If your height is 193 - 203 cm (6'4" - 6'8")



Weighs 1.9 kg

Measurement Guide

Chest Circumference: total measurement around the chest

Length: The highest point of your shoulder to hem

Women's Swimwear

Please Note: Our swimwear is tight fitting. If you fall between sizes, please size up.

INTERNATIONAL SIZES				BODY MEASUREMENTS					
Size	UK AUS NZ	EU	US	Bust		Waist		Hips	
XS	8	36	4	80-84 cm	31.5"-33"	62-66 cm	24.5"-26"	88-92 cm	34.5"-36"
S	10	38	6	84-90 cm	33"-35"	66-70 cm	26"-27.5"	92-96 cm	36"-37.5"
M	12	40	8	90-96 cm	35"-38"	70-74cm	27.5"-29"	96-102 cm	37.5"-40"
L	14	42	10	96-102 cm	38"-40"	74-79 cm	29"-31"	102-106 cm	40"-41.5"
XL	16	44	12	99-106 cm	39"-41.5"	79-84 cm	31"-33"	105-110cm	41"-43"
XXL	18	46	14	106-112 cm	41.5"-44"	84-89 cm	33"-35"	110-115 cm	43"-45"

How to Measure for Women's Swimwear

Bust: Take a flat measuring tape around the fullest part of your bust.

Waist: Take a flat measuring tape around the narrowest part of your waistline, just above your navel.

Hips: Take a flat measuring tape around the fullest part of your low hip. The measuring tape should sit level across your backside.

Eye Masks

Universal adult fit, easily adjustable Velcro closure creates a perfect, no-slip fit.